



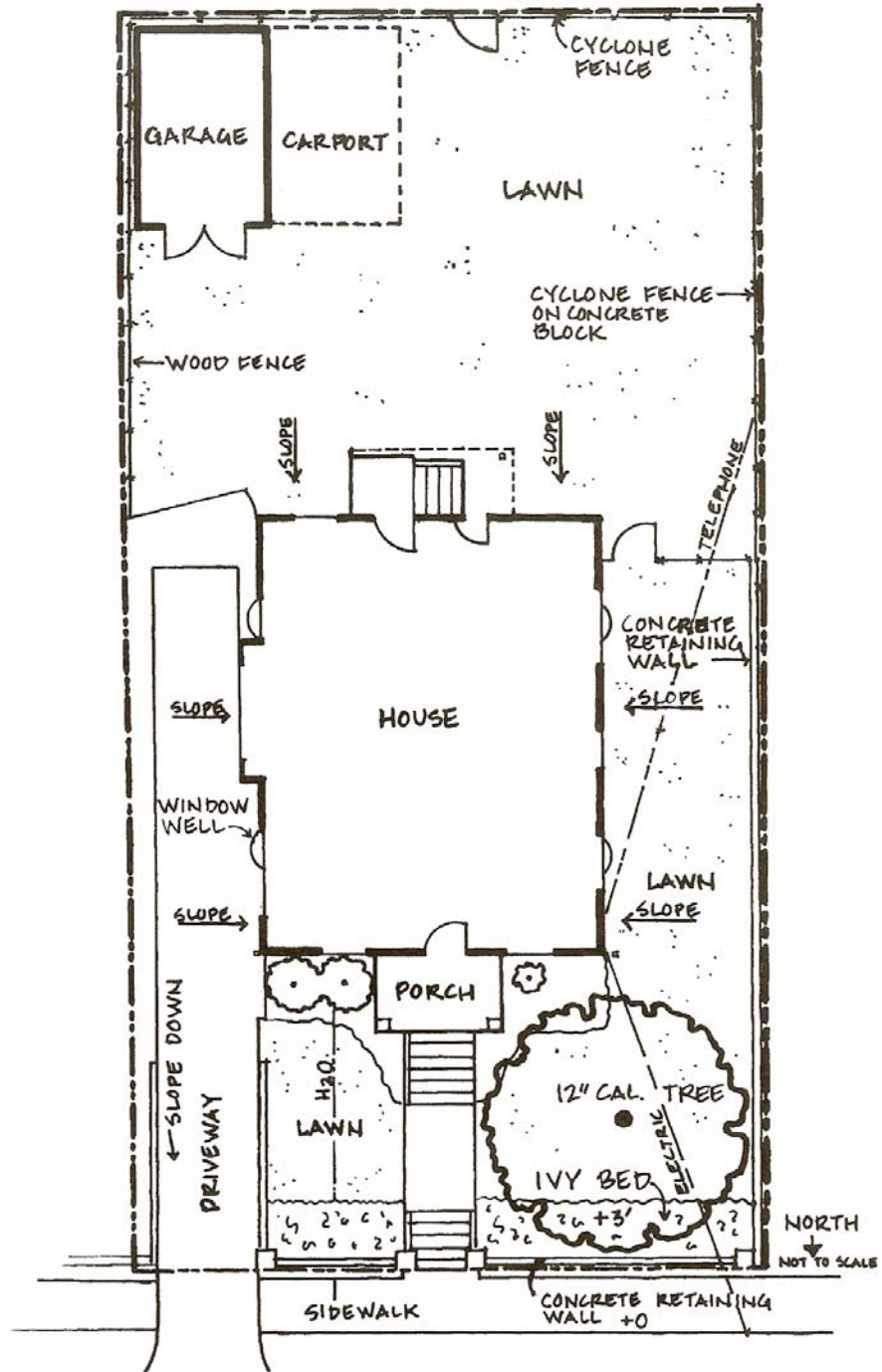
## Natural Garden Design

Designing a garden that attracts beneficials, utilizes responsible watering methods, incorporates native plants, and uses chemical controls as a last resort falls under a design concept called *Naturescaping*. The NBB program promotes Naturescaping in the local community as a way to reduce non-point source pollution. Non-point source pollution is the accumulation of many small sources creating a large pollution impact. Non-point source pollution in the urban environment can be directly linked to chemical usage in yards and gardens.

A few things to consider before beginning a naturescape project:

- Location of buildings
- Slopes
- Water sources
- Sun exposure
- Typical direction of the wind
- Existing vegetation and the micro-climates around them
- Use of site (sitting, play area, walkway, etc.)
- Neighbor's vegetation and buildings
- Views to keep (scenic) and views to hide (the neighbor's trash cans)

Following is an example of a naturescape plan of an existing residential lot.



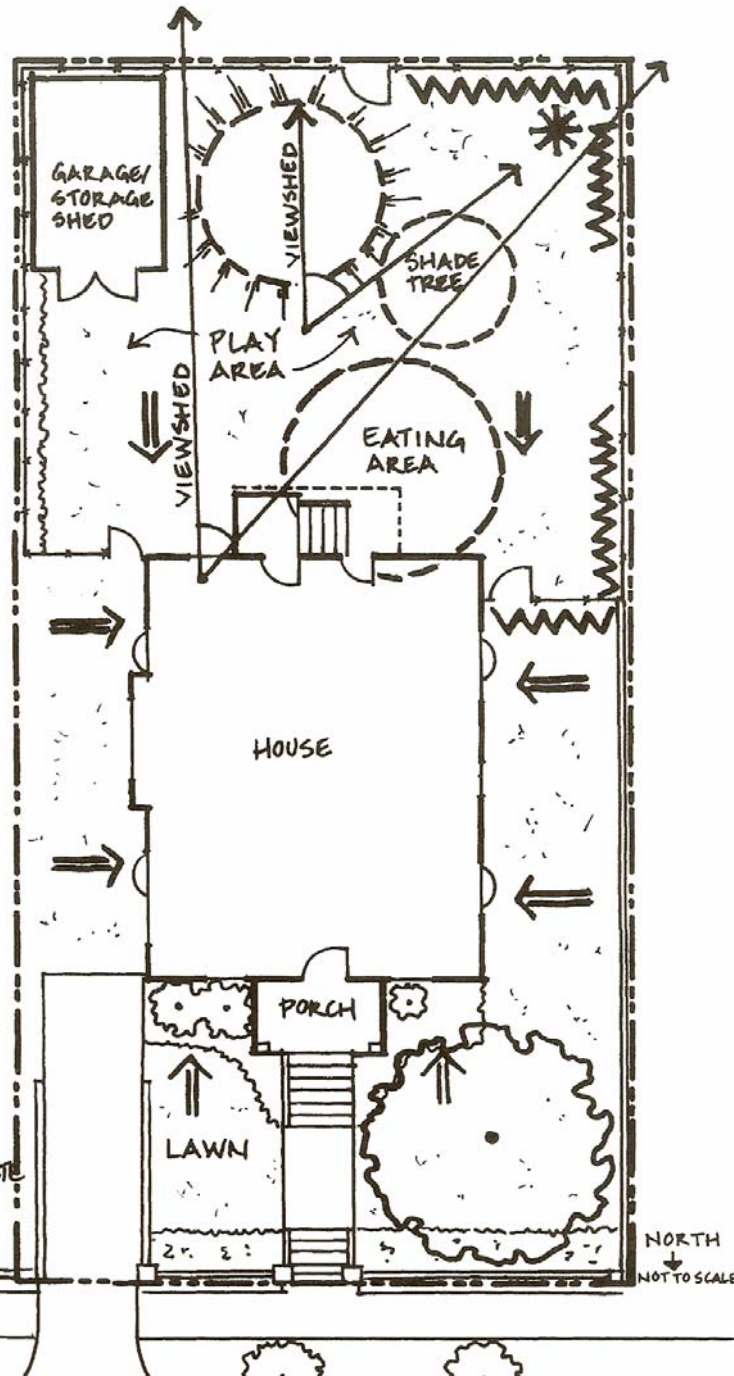
EXISTING CONDITIONS FOR 50' x 100' URBAN LOT

## LEGEND

- ↗ VIEWS FROM IN HOUSE AND YARD
- WV SCREEN NEIGHBORS YARD AND ENCLOSE EATING AREA
- ☀ FOCAL POINT PLANTING AREA
- ☀ HOT SOUTHERN EXPOSURE
- ⇓ EXISTING GRADE SLOPES TO HOUSE CREATING DRAINAGE PROBLEM

## SITE SOLUTIONS

- REGRADE BACK AND SIDE YARDS
- CREATE SWALE TO DIVERT WATER RUNOFF FROM HOUSE
- DISCONNECT DOWNSPOUT AND DIRECT ROOF RUNOFF TO SWALE AND INFILTRATION POND
- REMOVE CARPORT
- PLANT VEGETABLE GARDEN AND SHADE TREE
- INSTALL PATIO AND DRIVEWAY WITH POROUS PAVING MATL. SUCH AS BRICK, STONE, PAVERS, BROKEN CONCRETE ON SAND, GRAVEL OR CRUSHED STONE
- REMOVE INVASIVE IVY FROM FRONT BED



DESIGN OPPORTUNITIES FOR 50' x 100' URBAN LOT

- ECO ROOF PLANTS:  
DWARF GRASSES  
SEDUMS  
WILDFLOWER MIX

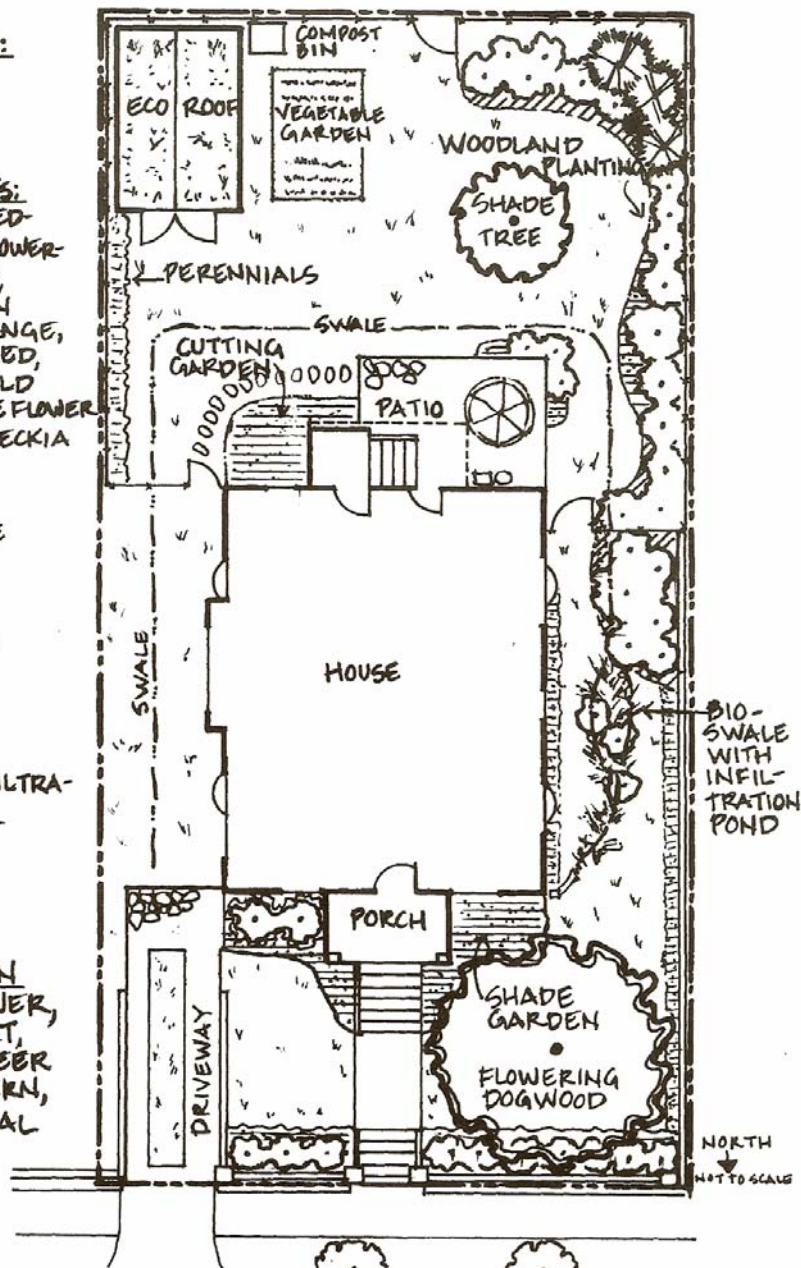
- WOODLAND PLANTS:  
INCENSE CEDAR, RED-OSIER DOGWOOD, FLOWERING RED CURRANT, VINE MAPLE, OCEAN SPRAY, MOCK ORANGE, SPIRAEA, FIREWEED, KINNIKINICK, WILD STRAWBERRY, CONEFLOWER, BEE BALM, RUDBECKIA

LEGEND

- ◉ EXISTING TREE
- TREE
- SHRUB
- ▨ GROUND COVER
- ▩ PERENNIALS
- LAWN

- SWALE AND INFILTRATION POND  
RUSH  
SEDGE  
WILLOW  
BULRUSH

- SHADE GARDEN  
INSIDE-OUT FLOWER,  
BLEEDING HEART,  
SWORD FERN, DEER FERN,  
LADY FERN,  
SOLOMON'S SEAL



MASTER PLAN FOR 50' x 100' URBAN LOT

If you are interested in more detailed instruction in naturoscaping your yard please visit the upcoming events link for a Natural Garden Design Workshop or contact the NBB office at (360) 891-1992 or nbb@clark.wa.gov.